



MAHARASHTRA EDUCATIONAL SOCIETY'S

HUMERA KHAN COLLEGE OF EDUCATION

H.K CAMPUS, Adjacent to MHADA Complex, Pratiksha Nagar, Oshiwara, Jogeshwari (W)

Affiliated to University of Mumbai & Approved by NCTE (NCTE Code No: 123082)

Tel: (022)26776221, Fax: (022)26790095

Email: [principal@hkce.edu.in](mailto:principal@hkce.edu.in) Website: [www.hkce.edu.in](http://www.hkce.edu.in)

NAAC Accredited Grade 'B'

## Report on Photography Competition - Flora & Fauna

**Maharashtra Educational Society's**  
**HUMERA KHAN COLLEGE OF EDUCATION**  
OSHIWARA JOGESHWARI (W) MUMBAI-400102  
NAAC ACCREDITED GRADE B  
UNDER ENVIRONMENT CELL & DLLE  
ORGANIZES  
**PHOTOGRAPHY COMPETITION**  
**"FRAMES THAT SPEAK:  
Flora & Fauna Edition"**  
PRESERVE WHAT YOU CAPTURE  
A PHOTOGRAPHY-CUM-PRESENTATION COMPETITION  
WHERE NATURE TELLS ITS STORY THROUGH YOUR LENS.  
DATE: 14<sup>TH</sup> FEBRUARY, 2026  
VENUE: 501, HKCE CLASSROOM  
I/C PRINCIPAL:  
DR.VARSHA MARU  
DLLE COORDINATOR:  
DR.AVANI KANAKIA  
THEME: FLORA & FAUNA  
VISION: SHAPING THE PUPIL TEACHER TO SHOULDER THE RESPONSIBILITY OF  
SHAPING THE FUTURE YOUTH OF THE NATION

The advertisement features a vibrant yellow background with various nature-themed illustrations. At the top left is the college's logo. The central text is bold and colorful, with 'PHOTOGRAPHY COMPETITION' in large green letters. Below it, the title 'FRAMES THAT SPEAK: Flora & Fauna Edition' is written in a mix of red and purple. A black camera is shown on the left, and a hand holding a leaf is on the right. At the bottom, a silhouette of a person with a camera on a tripod is set against a background of a forest scene with various animals like a bear, deer, rabbit, and fox. A QR code with the text 'SCAN ME!' is placed near the center. Logos for DLLE and NAAC are also present.



## MAHARASHTRA EDUCATIONAL SOCIETY'S

### HUMERA KHAN COLLEGE OF EDUCATION

H.K CAMPUS, Adjacent to MHADA Complex, Pratiksha Nagar, Oshiwara, Jogeshwari (W)

Affiliated to University of Mumbai & Approved by NCTE (NCTE Code No: 123082)

Tel: (022)26776221, Fax: (022)26790095

Email: [principal@hkce.edu.in](mailto:principal@hkce.edu.in) Website: [www.hkce.edu.in](http://www.hkce.edu.in)

NAAC Accredited Grade 'B'

### Introduction

The Environment Cell and DLLE of Humera Khan College of Education organized a Photography-Cum-Presentation Competition titled "Frames That Speak: Flora & Fauna Edition" on 14th February 2026. The competition aimed to encourage students to explore nature through their lens and present their understanding creatively. All DLLE students actively participated by submitting their photographs along with responses to questions through a Google Form. The presentation round was conducted on 15th February 2026 from 1:00 p.m. to 2:30 p.m. in Room No. 501. The event successfully blended creativity, environmental awareness, and communication skills.

### Objectives

- To encourage students to explore and appreciate nature through photography.
- To develop observational and creative skills among pupil teachers.
- To enhance students' presentation and communication abilities.
- To create awareness about the importance of preserving flora and fauna.
- To provide a platform for students to showcase their photography talent.

### Significance

The competition played a vital role in nurturing environmental sensitivity and artistic expression among students. It provided an opportunity for pupil teachers to look beyond textbooks and connect with nature in a meaningful way. By combining photography with presentation, the event helped students improve both technical and verbal skills. It also promoted confidence, creativity, and critical thinking while reinforcing the importance of preserving biodiversity.

### Content

The DLLE Photography Competition was conducted in multiple stages to ensure maximum participation and engagement from the students. Initially, all students were invited to participate by submitting their original photographs along with answers to questions regarding their photography process, inspiration, and the subjects they captured. The submissions were collected through Google Forms, which allowed for a smooth and organized process, ensuring that every participant could share their work digitally.

The theme focused on Flora and Fauna, highlighting the beauty and importance of plants and animals in our ecosystem.

On 15th February, the presentation session was held from 1:00 PM to 2:30 PM. More than 30 students actively participated, presenting their photographs to the audience and the judge. Each student explained the story behind their photograph, the techniques they used, and the significance of the subject captured,



## MAHARASHTRA EDUCATIONAL SOCIETY'S

### HUMERA KHAN COLLEGE OF EDUCATION

H.K CAMPUS, Adjacent to MHADA Complex, Pratiksha Nagar, Oshiwara, Jogeshwari (W)

Affiliated to University of Mumbai & Approved by NCTE (NCTE Code No: 123082)

Tel: (022)26776221, Fax: (022)26790095

Email: [principal@hkce.edu.in](mailto:principal@hkce.edu.in) Website: [www.hkce.edu.in](http://www.hkce.edu.in)

NAAC Accredited Grade 'B'

which primarily focused on flora and fauna. The presentations highlighted not only their photography skills but also their understanding of nature, attention to detail, and creative perspective.

Each participant explained the story behind their captured frame, the techniques used, and the environmental message conveyed through their work. The audience gained valuable insights into photography skills, different perspectives of nature, and informative facts about flora and fauna.

The judging of the competition was conducted by **Dr. Avani Kanakia DLLE Extension Teacher**, who evaluated the submissions based on creativity, technical skill, presentation, and the clarity of explanation. Three students were selected as winners, and their work was appreciated for both artistic expression and technical proficiency.

The program was successfully executed by the **Student Managers, Aqsa Jairajpuri and Lubna Shaikh**, ensuring smooth coordination and time management throughout the event.

### **Learning Outcomes**

The competition enhanced students' creativity, observational skills, and environmental awareness. Participants developed confidence in public speaking and improved their ability to articulate ideas effectively. The audience learned different photography techniques, gained knowledge about flora and fauna, and understood the importance of preserving nature. Through this photography competition, students developed multiple skills and gained valuable knowledge. They enhanced their technical abilities in photography, including composition, lighting, and framing, while also cultivating a deeper appreciation for flora and fauna. Presenting their work strengthened public speaking and communication skills, allowing them to articulate their creative process and perspective. Additionally, students improved critical thinking and observational skills as they analyzed and discussed the photographic work of their peers. This competition also fostered teamwork, peer learning, and a healthy competitive spirit. Overall, the event not only nurtured artistic talent but also contributed to holistic skill development, preparing students to approach projects with creativity, confidence, and analytical insight.



MAHARASHTRA EDUCATIONAL SOCIETY'S

HUMERA KHAN COLLEGE OF EDUCATION

H.K CAMPUS, Adjacent to MHADA Complex, Pratiksha Nagar, Oshiwara, Jogeshwari (W)

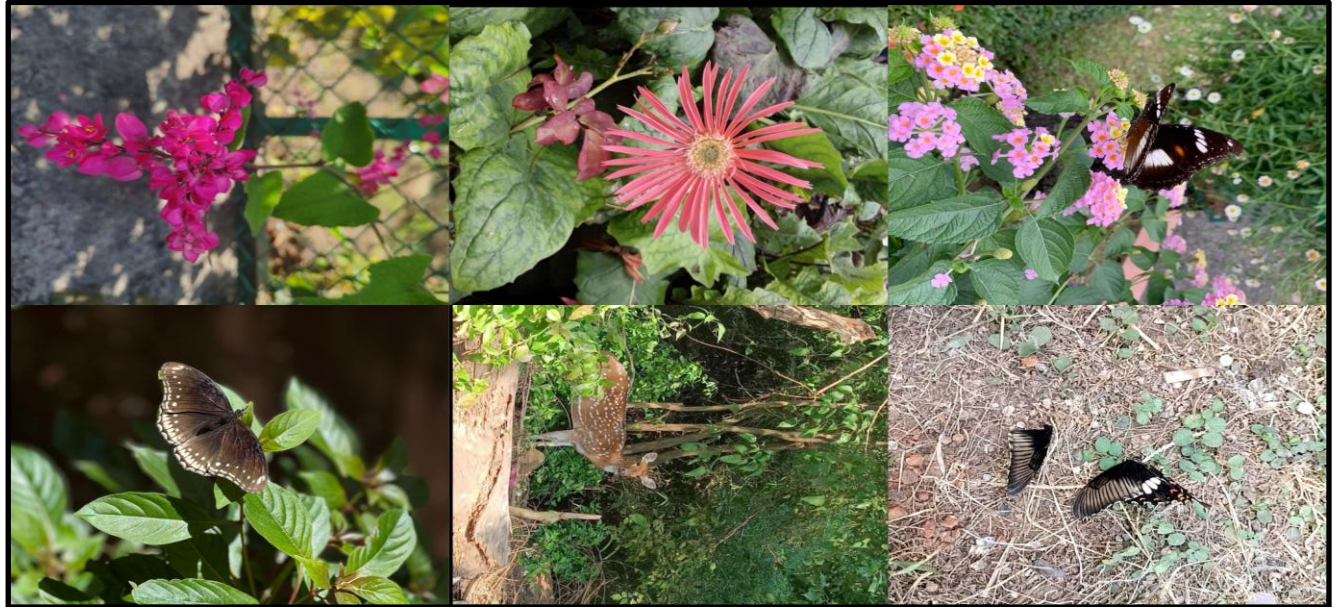
Affiliated to University of Mumbai & Approved by NCTE (NCTE Code No: 123082)

Tel: (022)26776221, Fax: (022)26790095

Email: [principal@hkce.edu.in](mailto:principal@hkce.edu.in) Website: [www.hkce.edu.in](http://www.hkce.edu.in)

NAAC Accredited Grade 'B'

## Glimpse of "Flora & Fauna" Photography





MAHARASHTRA EDUCATIONAL SOCIETY'S

HUMERA KHAN COLLEGE OF EDUCATION

H.K CAMPUS, Adjacent to MHADA Complex, Pratiksha Nagar, Oshiwara, Jogeshwari (W)  
Affiliated to University of Mumbai & Approved by NCTE (NCTE Code No: 123082)

Tel: (022)26776221, Fax: (022)26790095

Email: [principal@hkce.edu.in](mailto:principal@hkce.edu.in) Website: [www.hkce.edu.in](http://www.hkce.edu.in)

NAAC Accredited Grade 'B'





MAHARASHTRA EDUCATIONAL SOCIETY'S

HUMERA KHAN COLLEGE OF EDUCATION

H.K CAMPUS, Adjacent to MHADA Complex, Pratiksha Nagar, Oshiwara, Jogeshwari (W)

Affiliated to University of Mumbai & Approved by NCTE (NCTE Code No: 123082)

Tel: (022)26776221, Fax: (022)26790095

Email: [principal@hkce.edu.in](mailto:principal@hkce.edu.in) Website: [www.hkce.edu.in](http://www.hkce.edu.in)

NAAC Accredited Grade 'B'





MAHARASHTRA EDUCATIONAL SOCIETY'S

HUMERA KHAN COLLEGE OF EDUCATION

H.K CAMPUS, Adjacent to MHADA Complex, Pratiksha Nagar, Oshiwara, Jogeshwari (W)  
Affiliated to University of Mumbai & Approved by NCTE (NCTE Code No: 123082)

Tel: (022)26776221, Fax: (022)26790095

Email: [principal@hkce.edu.in](mailto:principal@hkce.edu.in) Website: [www.hkce.edu.in](http://www.hkce.edu.in)

NAAC Accredited Grade 'B'





MAHARASHTRA EDUCATIONAL SOCIETY'S

HUMERA KHAN COLLEGE OF EDUCATION

H.K CAMPUS, Adjacent to MHADA Complex, Pratiksha Nagar, Oshiwara, Jogeshwari (W)

Affiliated to University of Mumbai & Approved by NCTE (NCTE Code No: 123082)

Tel: (022)26776221, Fax: (022)26790095

Email: [principal@hkce.edu.in](mailto:principal@hkce.edu.in) Website: [www.hkce.edu.in](http://www.hkce.edu.in)

NAAC Accredited Grade 'B'





MAHARASHTRA EDUCATIONAL SOCIETY'S

HUMERA KHAN COLLEGE OF EDUCATION

H.K CAMPUS, Adjacent to MHADA Complex, Pratiksha Nagar, Oshiwara, Jogeshwari (W)  
Affiliated to University of Mumbai & Approved by NCTE (NCTE Code No: 123082)

Tel: (022)26776221, Fax: (022)26790095

Email: [principal@hkce.edu.in](mailto:principal@hkce.edu.in) Website: [www.hkce.edu.in](http://www.hkce.edu.in)

NAAC Accredited Grade 'B'

